

ASPHALT MIXING PLANT

沥青搅拌设备

郑州普盛机械设备有限公司
ZHENGZHOU SINOSUN MACHINERY CO.,LTD

地址:河南省南阳市溧河工业园

Add: Lihe Industrial Park Area, Nanyang, Henan Province

Tel(电话): 0086-371-89915650

Fax(传真): 0086-371-89915651

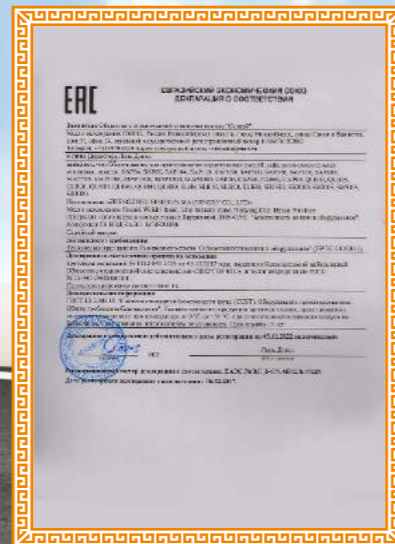
Email(邮箱): info@sinosun-group.com

Web(网址): www.sinosun-group.com



ZHENGZHOU SINOSUN MACHINERY CO.,LTD

SINOSUN GROUP



CONTENTS/目录

01

公司简介

Company Profile

03

SAP系列固定式沥青搅拌站

SAP series Stationary Asphalt Mixing Plant

11

再生沥青搅拌设备

Recycle Asphalt Mixing Plant

15

MAP系列移动式沥青搅拌站

MAP series Mobile Asphalt Mixing Plant

17

CAP系列筒拌式沥青搅拌站

CAP series Drum Mix Asphalt Mixing Plant

19

QLB系列双卧轴式沥青站

QLB series Twin-shaft Asphalt Mixing Plant

20

SLB系列双滚筒式沥青站

SLB series Twin-drum Asphalt Mixing Plant

21

其他沥青站相关设备

Ancillary Equipments

25

MFR系列煤粉燃烧器

MFR series Coal Burner

27

MFR-M系列煤油气多功能燃烧器

MFR-M Multi-function Oil&Gas&Coal Burner

29

沥青罐

Bitumen Tank

30

客户来访

Foreign Customer

31

服务

Service

32

工程案例

Projects

公司简介 COMPANY PROFILE

普盛集团创立于2004年，主要从事工程筑路机械的产品设计开发与生产销售，是一家持续创新的全球化企业。企业自成立以来，始终秉持“诚实、守信、优质、创新”的企业文化，专注于打造工程筑路机械类知名品牌，除各种技术专利以外也获得欧盟CE证书、ISO9001质量体系认证和EAC证书。下设有沥青搅拌站、混凝土搅拌站、燃烧器三大系列产品生产线。

普盛沥青站，成立多年来，员工近300人，其中工程师37名，售后服务人员52名。生产基地位于河南南阳溧河工业园，目前可生产强制式沥青搅拌站、移动强制式沥青搅拌站、固定连续式沥青搅拌站和移动连续式沥青搅拌站等适应不同工程需求的主流种类，产能范围达10-400T/H，同时可根据具体的工程条件或客户的配置要求订制设备，满足客户多样化的需求。

我们沥青设备的优点：

1. 较高的性价比，我们的价格和信誉赢得了顾客的信任
2. 灵活的设计方案，提供顾客所需要的，根据顾客需求为订货的顾客设计
3. 模块化结构设计，为节省费用，减轻安装和运输，运用集装箱密实结构
4. 专业的售后服务团队可以提供有效和专业的服务

普盛的沥青搅拌设备以这些优点，如今每年生产和销售沥青站等设备300多套，年销售额一亿两千多万。在国内，我们承担完成了诸多国家高技术产业示范化工程，设备广泛用于国家“五纵七横”高等级公路以及2008年北京奥运会的北京城市环线高速公路等多项重点工程。

在国外，我们的沥青搅拌站产品遍销全球，出口至俄罗斯、罗马尼亚、波兰、巴西、菲律宾、泰国、印度、印度尼西亚、安哥拉、沙特、阿尔及利亚、埃塞俄比亚、秘鲁、阿根廷、智利、哥伦比亚等60多个国家。为此，我们专门设立了国外服务中心，以期国外的客户可以得到更加国际化更加及时的专业服务。

欢迎前来普盛参观，了解更多的沥青产品信息！



01/02

SINOSUN Group was founded in 2004, which is a high-tech technology company integrating design, manufacturing and sale of high-tech technology. Since SINOSUN inception, always hold "honest and trustworthy, quality, innovation," the corporate culture, to create a class of well-known brands of road construction machinery industry and CE, ISO9001:2008 and EAC certificate. Our main products are asphalt mixing plant, concrete mixing plant, burner.

Our Asphalt Mixing Plant Factory has about 300 staffs now, including 37 senior engineers over national title, 52 after-sales service personnel that have rich experience in domestic and international service. Factory main product lines focus on four kinds of asphalt batch mixing plant, mobile asphalt mixing plant, continuous asphalt mixing plant and mobile continuous asphalt mixing plant. Manufacturing wide range of different models equipment which can be meet customer's needs, also meet the diverse needs of customers.

The advantages of our asphalt mixing equipment:

1. Higher quality with reasonable price. Our Prices and reliable configuration have won the customers trust.
2. Flexible design. Meeting the needs of customers provided, according to customer requirements, designed for customers who order.
3. Modular structure. Containerized compact structure. To save costs and easy installation and transportation.
4. Professional after-sale service team can provide efficient and professional service.

With these advantages, company annual production and sales of asphalt plants more than 300 sets, annual sales more than one hundred million, with virtue of excellent quality and professional technology, we have successfully completed many assume national high-tech industrialization demonstration engineering, these Equipments are widely used in a number of national key projects, "five vertical and seven horizontal" highway and the 2008 Beijing Olympic Games Beijing city ring road highway.

So far, our asphalt mixing plant products have been widely used in domestic road construction projects. Such as Russia, Romania, Poland, Brazil, the Philippines, Thailand, India, Indonesia, Angola, Saudi Arabia, Algeria, Ethiopia, Peru, Argentina, Chile, Colombia, more than 60 countries and products around the world, Popular with the customers and praise.



SAP系列固定式沥青搅拌站

SAP series Stationary Asphalt Mixing Plant

- 智能便捷 Smart and Convenient
- 节能环保 Environmental and Energy saving
- 计量精确 Accurate measurement
- 安全可靠 Safe and Reliable
- 场站布局 Layout



节能环保

Environmental and Energy saving

- 重力和布袋两级除尘，排烟浓度达到林格曼一级，含尘量 $\leq 20\text{mg}/\text{Nm}^3$ 。
Dust collector including gravity and filter bag, emission concentration $< \text{Ringelmann I}$, Air emissions $\leq 20\text{ mg}/\text{Nm}^3$.
- 设备采用消音、隔音、减震等措施，显著降低噪音排放，环境噪音 $\leq 80\text{dB(A)}$ 。
Equipment adopt the sound attenuation, sound insulation, shock absorption, significantly reduce noise emissions, environmental noise $\leq 80\text{ db (A)}$.
- 布袋除尘采用高压空气脉冲反吹，清灰效果好；滤袋设有高、低温保护装置，延长滤袋使用寿命。
Bag filter adopt high pressure impulse, good cleaning effect, Filter bag is equipped with high and low temperature protection, prolong the service life of the filter bag.
- 燃烧器采用意大利专利设计，燃烧效率高，适用燃料广，根据用户需要，可适用柴油、重油、烟煤，燃气等多用途燃料，环保节能。
Burner adopt Italy patent design, high combustion efficiency, wide application of fuel, according to user needs, can use fuel such as diesel oil, heavy oil, coal, Gas, environmental protection, energy saving.
- 独特的搅拌叶片设计及简捷高效的驱动方式使得搅拌更轻松、高效、可靠
The unique mixing blade design and simple and efficient way of driving make stir more easy, efficient and reliable.
- 采用美国NOMEX过滤袋，耐高温，使用寿命长。
Adopt USA NOMEX filter bags, high temperature resistant and long service life.

智能便捷

Smart and Convenient

- 自主研发的PC+西门子PLC控制系统，可实现自动控制、半自动控制和手动控制。
PC+SIEMENS PLC control system, can realize automatic control, semi-automatic control and manual control
- Wifi远程控制，故障预警诊断，报表功能齐全，打印生产报表；
Wifi remote Control, fault warning diagnosis, completely report and print report of production.
- 人性化设计，Windows操作平台，显示电机以及燃烧器运行动态和监控冷料情况。
Humanization design, Windows operation system, display the status of motors and burner, monitor the cold bin.
- 系统具有参数设定、数据治理、故障诊断等功能，使操作简单、安全
System with parameter setting, data management, fault diagnosis, etc, make the operation simple and safe.



安全可靠

Safe and Reliable

- 国际知名品牌配套, 稳定性好, 可靠性高, 有效地保证了产品质量。
International Famous Brand Components, high stability and reliability, effectively guaranteed the quality.
- 控制系统双主机冗余设计, 动态流程显示, 操作性能可靠。
Control system adopt dual host redundancy design, dynamic process, good performance.
- 可靠的集中润滑系统，自动定时省工省时，润滑可靠，延长使用寿命。
Reliable centralized lubrication system, lubrication reliable and prolong service life.
- 发货前全部进行厂内组装、调试，大幅缩减工地安调时间，保证产品质量。
Before delivery, all the components assembly, debug, these preparation work reduced the site adjustment time, ensure the quality of products.
- 在关键部件装有机械式检修口，保护维修人员生命安全。
Key components are equipped with mechanical maintenance hole, ensure the workers safety.

计量精确

Accurate measurement

- 采用欧洲标准设计的整体热系统动力配合精确的称量系统，降低油耗、电耗等生产成本，经济、节能；采用美国TOLEDO称重传感器，计量精确。
Adopts European standard in terms of heat power system, which is enhanced by accurate weighing system, reducing oil and electricity consumption; Adopts USA Mettler Toledo brand load cells, which is very precise and with a high weighing accuracy.
- 沥青泵为采用变频控制+二次计量技术，落差自动修正，沥青计量精度：动态 $\pm 2.5\%$
Bitumen pump adopt frequency control+ the secondary measurement technology, automatic error correction, bitumen weighing accuracy: Dynamic $\pm 2.5\%$.
- 骨料计量采用，落差自动校正，计量精度：动态 $\pm 1.5\%$ ；粉料计量精度：动态 $\pm 1.0\%$
Hot aggregates adopt automatic fall correction, weighing accuracy: Dynamic $\pm 1.5\%$;
Mineral weighing accuracy: Dynamic $\pm 0.5\%$.
- 油石比精度 $\leq \pm 0.1\%$
Precision of bitumen aggregate ratio $\leq \pm 0.1\%$
- 冷料计量皮带采用西门子变频器调速皮带，调速精确稳定。
Each Cold bins equipped with SIEMENS brand frequency converter and module, dosing accurately.

场地布局

Layout

- 设备采用模块式结构，三维绘图软件立体设计，可根据施工要求，灵活组合形成多种配置。
Equipment adopts modular structure, 3D drawing software of three-dimensional design, can according to the construction requirements, and combined to form a variety of configuration .
- 占地面积小，结构紧凑，解决了因场地不足而遇到的困难。
Small land occupied, compact structure, Solves the difficulties due to lack of space.
- 简化基础，安装、维护便捷，运输方便，便于转场。
Simplify the basis, easy to install and maintenance , easy-transportation and transfer.
- 布局合理，外观美观大方。
Rational layout, novel and decent appearance.

冷料斗 Cold Aggregate Bin



裙边带/ 缺料报警装置/ 电机减速机直连设计
Side wall type belt conveyor / Alarm sensor / Direct connection

干燥滚筒 Dryer Drum



美国ASTEC设计弹性板/ 内部刮板采用日本Nikko设计/ 电机硬齿面直连
USA ASTEC Design Elastic Plate/ Inner blades adopt Japan Nikko Design/
Motor direct connection

振动筛 Vibration Screen



意大利OLI品牌/ 双电机直线型/ 高耐磨筛网
Italy OLI brand / Double vibrator linear type/ High wear resistance mesh screen

拌缸 Mixer



意大利MARINI技术/ 电机直连/ 铬钼锰合金钢耐磨材料
Italy MARINI design / Direct connection / Chromium manganese alloy steel

除尘器 Bag House Dust Filter



美国杜邦诺梅克斯除尘布袋/ 耐高温
USA DuPont Nomex brand filter bags/ High temperature Resistance

控制系统 Control System



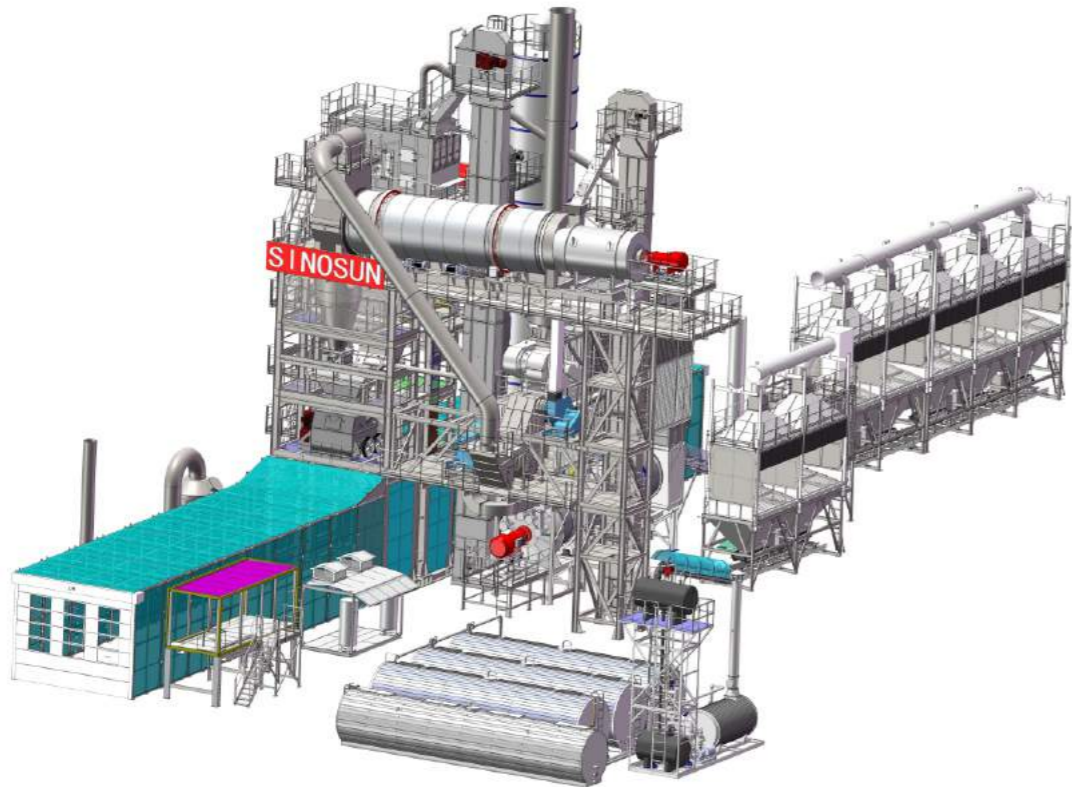
西门子PLC控制系统/ wifi远程监控系统
SIEMENS PLC control system / Remoting control with wifi

产品参数/Parameter

Model 型号	SAP64	SAP80	SAP100	SAP120	SAP160	SAP240	SAP320
Installation Power(kw) 装机功率	154	215	232	340	430	600	860
Rated Capacity(T/H) 额定产量	64	80	100	120	160	240	320
Cold Aggregate Kinds 冷料斗	4*6.5m³	4/5*8m³			5/6*12m³	5/6*15m³	6*15m³
Drying Drum Length/Diameter 干燥滚筒尺寸	6.5m * Φ 1.5 m	7m * Φ 1.7 m	7m * Φ 1.7 m	8 m * Φ 1.8 m	9 m * Φ 2.25 m	10 m * Φ 2.5 m	10 m * Φ 2.7 m
No. of Screen Layers 振动筛层数	4 layers	4 layers	4 layers	4/5 layers	5/6 layers	5/6 layers	6 layers
Vibrating Screen 振动筛	Double Italy OLI Brand Vibrator Liner type 双振动电机直线式						
Mixing Period(s) 搅拌周期	45						
Capacity of Mixer(kg) 搅拌锅能力	800	1000	1300	1500	2000	3000	4000
Fuel Consumption 油耗	≤6.5kg/T finished product ≤6.5kg/吨成品料						
Fuel Type 燃料类型	Heavy oil/Diesel/Coal/Natural gas/Liquefied petroleum gas 轻重油/煤/天然气/液化气						
Dust Collecting Model 除尘方式	Gravity dust collector+ NOMEX Bag House Dust Filter						
Control Method 控制方式	Manual / Automatic 手动/自动						
Temperature of Finished Product 成品料温度(摄氏度)	140-180℃						
Emission Concentration 尾气排放浓度	≤20mg / Nm³ ≤20毫米/标准立方米						
Finished Product Silo 成品仓	20/40/60/80/100/120/200T Bottom Type(Optional) 底置式						



SR系列整体式高比例沥青再生设备
SR Series Integrated Virgin & Recycling Asphalt Plant Equipment

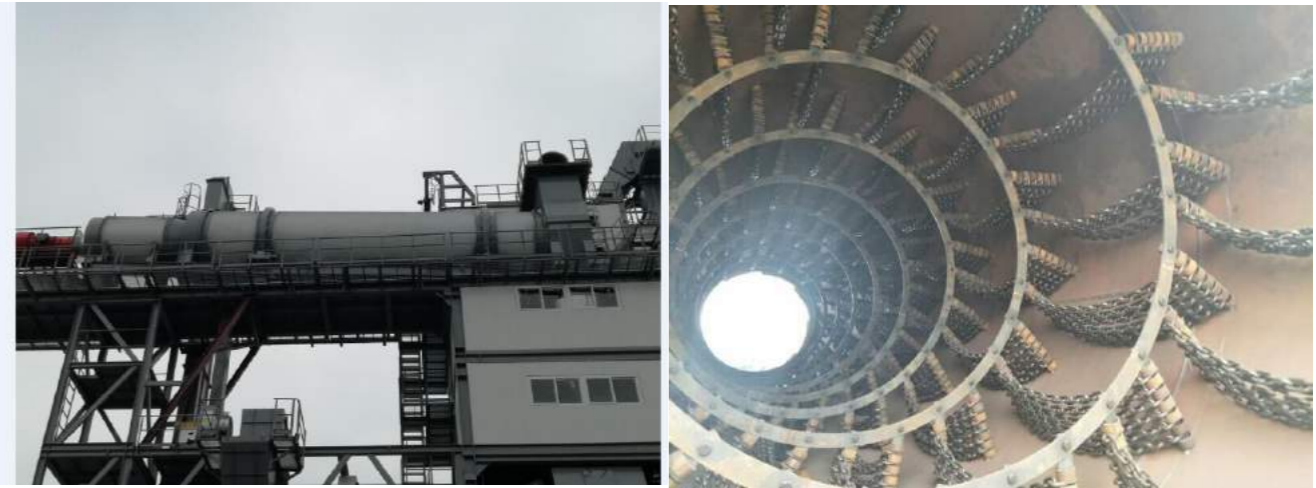


特点介绍 Features

- 搅拌主机安置在再生楼上，改变再生料传统加热模式，结构设计新颖，原生站和再生站一体式设计，高再生料添加比例，高产量。
The mixer is settled together with the tower of RAP system, changed the traditional heating mode of reclaimed materials, new structure design, virgin asphalt integrated with the recycled asphalt together, high add ratio for recycled asphalt, high capacity performance.
- 再生干燥滚筒造型独特，刮料板最大程度防止粘料，生产高效稳定，维护安全简便。
Special sized dryer drum blades can prevent adhesive aggregate, make the production stable and efficient, easy to maintenance.
- 高温废气通过回程烟道返回干燥滚筒再次利用，节约能耗的同时减轻除尘设备负担。
The high temperature exhaust gas returned to dryer drum through the flute to refuse which can save energy while reducing the burden of dust collection equipment.
- 此再生方式旧料添加比例达30%-80%。
The old aggregate adding rate can reach up to 30%-80% through this method.

产品参数/Parameter

Model 型号	SR1510	SR2010	SR2015	SR3015	SR3020
Capacity of virgin asphalt 原生站产量（t/h）	120	160	160	240	240
Capacity of RAP asphalt 再生站产量（t/h）	80	80	120	120	160
RAP/Virgin ratio 再生/原生比例（%）	50%	33%	50%	37.5%	50%
Capacity of Mixer 拌缸容量（Kg）	2000	3000		4000	
Total capacity 总产量（t/h）	140-160	200-240		280-320	
Bag house filter area 布袋除尘面积（m²）	650	920		1200	
Dimension of dryer drum 滚筒尺寸（m）	Φ1.95×8	Φ2.25×9		Φ2.5×10	
Capacity of burner 燃烧器产量（MW）	14.8	19.7		29.6	
Dimension of RAP dryer drum 再生滚筒尺寸（m）	Φ2.25×8		Φ2.5×10		Φ2.5×12
Capacity of RAP burner 再生燃烧器产量（MW）	9.8		14.8		19.7
Fuel type 燃料类型	Coal/ Gas/ Diesel/Heavy oil 煤/天然气/柴油/重油				
Emission 尾气排放浓度（mg/Nm³）	≤30				





沥青温拌装置
Asphalt Foaming Warm Mix Device

特点介绍 Features

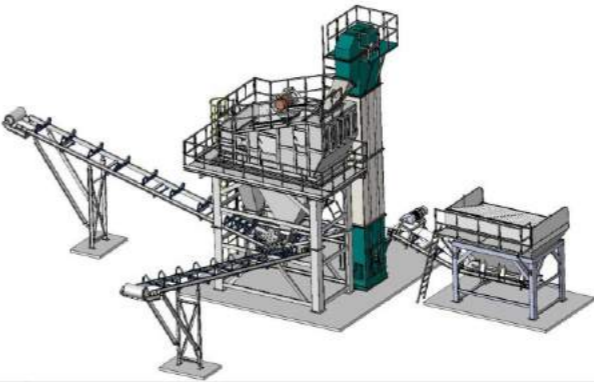


- 提高回收料添加比例，减少能耗和生产成本。
Increase the proportion of reclaimed materials, reduce the consumption and production cost.
- 有效减轻沥青老化，减少如沥青烟等温室气体排放，改善工作环境。
Effectively reduce the degree of asphalt aging, reduce greenhouse gases, such as asphalt smoke emissions, improve the working environment.
- 延长沥青拌合站设备使用寿命，减少设备运营成本。
Prolong the service life of asphalt mixing equipment, reduce the equipment operation cost.
- 能适应各种工作环境，尤其是低温条件下长期大型的隧道建设。
Adapt to a validity of working conditions, especially in low temperature construction of long and large tunnel construction.
- 各技术性能符合建设标准要求，提高沥青和石料的施工性能。
Each technical performance meet to the requirement of construction standard, increase the workability of asphalt and stone.

经济效益分析/Economic benefit analysis

混合料类型 Mixture type	AC-20 25% RAP 再生沥青 AC-20 25% RAP recycled asphalt		AC-13 SAB 改性沥青 AC-13 SAB modified asphalt	
	泡沫沥青温拌 Foamed asphalt warm mixing	热拌 Hot mixing	泡沫沥青温拌 Foamed asphalt warm mixing	热拌 Hot mixing
温度(℃) Temperature	130~135	155~165	145~150	170~175
平均尾气排放浓度 Average unit gas consumption(m³/t)	4.9	7.3	4.8	7.7
使用温拌节约费用 Saving cost when use warm mixing (Yuan/t)	7.3-4.9=2.4		7.7-4.8=2.9	
节约煤气成本 Gas cost saving (Yuan/t)	3.58*2.4=8.59		3.58*2.9=10.38	
节约部分能量(%) Fractional energy saving	2.4/7.3*100=32.88		2.9/7.7*100=37.66	

破碎筛分设备
Breaking Screening System



基本参数/Parameter

型号	Model	PS-60
产量	Output	60t/h
输送机功率	Bin conveyor power	5.5kw
破拱功率	Broken arch power	0.37kwX3
供料皮带功率	Feeding conveyor power	5.5kw
返回皮带功率	Returning conveyor power	5.5kwX2
振动功率	Vibrating power	2.6kwX2
破碎机功率	Crusher power	37kw
出料皮带功率	Discharging conveyor power	5.5kw×2
总功率	Total power	77kw

MAP系列移动式沥青搅拌站

MAP series Mobile Asphalt Mixing Plant



主要特点

Main Features

- 采用韩国DMI移动站设计结构，移动性能高，占地少、运输方便、转场后可在短期内重新生产。
Adopt Korea DMI mobile asphalt plant structure design, high mobility performance, small land occupied, convenient transportation and little downtime.
- 采用AVIC品牌航空快速插头，快速拆装电线。
Adopt AVIC brand Aviation Plugs, easy connection, fast disassembly and assembly wires.
- 操作简便的生产工艺流程，控制系统精度高、可靠性强、性能稳定。
Simple and convenient production technology process, accurate, highly reliable and stable control system.
- 可实现一车拖，快速转场，节省人力物力。
Move fast, save cost.
- 干燥，称量，搅拌，出料系统全程电脑全自动控制。
System of drying, weighing, mixing, discharging are full-automatically controlled.
- 各个部件相互独立存在，可实现无缝连接。
All the units are separated mutually while each unit can achieve seamless connection.

基本参数/Parameter

Model 型号	MAP1000	MAP1300	MAP1500	MAP2000	Remarks 备注
Total power 功率	215kw	235kw	340kw	430kw	Standard configuration 标准配置
Capacity 产量	80T/H	104T/H	120T/H	160T/H	5% moisture 5%含水率
Mixer Capacity 拌缸容量	1000kg	1300kg	1500kg	2000kg	Rated 额定
Mixing period 搅拌周期	45s				
Cold aggregate kinds 冷料斗	4			4/5	
Fuel consumption 燃料消耗量	≤6.5kg/T finished product				Light/Heavy oil/Gas 轻油/重油/燃气
Finished product temperature 出料温度	140℃-180℃				
weighing precision 称重精度	±2.5%				Dynamic 动态
Air emission concentration 空气排放	≦20mg/Nm3				NOMEX Bag filter NOMEX 除尘
Trailing speed 速度	40-100Km/h				Air brake System 气刹系统
Trailer quantities 拖车数量	5 units				Excluding Bitumen tank, Filler silo 不含沥青罐粉仓



CAP系列筒拌式沥青搅拌站

CAP series Drum Mix Asphalt Plant

主要特点 Main Features

- CAP系列连续式沥青搅拌站主要用于路面基层或底基层。CAP系列可移动沥青站主要包括如下主要部分：冷料仓，搅拌滚筒与燃烧器(含除尘器),沥青罐，导热油加热系统，热料储存仓，控制系统。
CAP series continuous asphalt mixing plant is designed for road base and sub base applications ,it includes the following main sections : cold feed bins ,drum mixer and burner (with filter) ,bitumen tank ,thermal oil heater, hot storage silo, control system.
- 所有这些部件都统一安装在轮式拖车底盘上。CAP系列沥青站易于运输，方便拆卸安装。有移动式 and 固定式供选择
All these sections are mounted on wheeled trailer chassis. It is easily transport from site to site. And the plant is easy dismantle and erection. Also can be designed for mobile type.

基本参数/ Parameter

Model 型号	CAP20	CAP40	CAP60	CAP80	CAP120	Remarks 备注
Rated Output (t/h) 额定产量(吨/时)	20	40	60	80	120	5% moisture 5%含水率
Total Power (kw) 总功率（千瓦）	50	69	110	150	210	Standard Configuration 标准配置
Dimension (L×W×H)m 主机尺寸(长×宽×高)	17.9×3.1×4.48			17×3.1 ×4.48	18.5×3.1 ×4.48	
Number of Axles 车桥轴数	2				3	
Volume of Cold Aggregate Hopper 级配斗容积	3×7m³	3×7m³	4×7m³	4×8m³	4×8m³	
Dimension of Drying Drum (diameter×length) 滚筒尺寸(直径×长度)	Ø1.2m ×3.8m	Ø1.2m ×5.3m	Ø1.5m ×7m	Ø1.5m ×8m	Ø1.8m ×8.5m	
Dust Collector Type 除尘器类型	High Voltage Pulse Dust Collector 高压脉冲除尘器					Other Dust Collector Optional 其他类型除尘器可选
Filter Area of Dust Collector 除尘器过滤面积	115m²	150m²	255m²	255m²	340m²	
Mixing Type 搅拌类型	Drum Mix,Continuous Mix 滚筒连续式					
Bitumen Heating Type 沥青加热方式	Direct Heating(thermal oil heating is optional) 直热(可选导热油加热)					
Bitumen Measuring Type 沥青计量方式	Flow Measurement 流量计量					
Temperature of Finished Product 成品料温度(摄氏度)	130~160℃					



QLB系列双卧轴式沥青搅拌站

QLB series Twin-shaft Asphalt Mixing Plant

简介 Introduction

- QLB系列沥青搅拌站是双卧轴式沥青搅拌站，强制式干燥滚筒设计与双卧轴式搅拌机。QLB系列沥青站采用模块化设计，易于运输，拆卸，安装
The series plant are Twin Shaft Asphalt Mixing Plant. It integrated design of batch type drying drum and horizontal twin-shaft mixer.
- 产能范围是从10-80吨/小时
The capacity of QLB series portable Asphalt Mixing Plant is from 10-80t /h.



基本参数/Parameter

Model 型号	QLB-10	QLB-15	QLB-20	QLB-30	QLB-40	QLB-60	QLB-80
Capacity (t/h) 产量	10	15	20	30	40	60	80
Fuel 燃油	41.5	54	63.5	104.5	125	157.5	200
Coal 燃煤	57.5	75	86.5	127.5	169	205	276
Aggregate Batcher 骨料计量	-----	-----	2.3m³×3	5 m³×3	5m³×3	5m³×3	5m³×3
Weight of product silo(T) 成品料斗容量(吨)	2	5	5	9	9	9	20
Discharge temperature 成品料温度	120-180℃ (adjustable)						
Fuel consumption 油耗	Fuel oil : 57.5kg / t Coal :1315kg /t						
Optional components 可选部件	Coal breaker, Water filter, Bag filter Control Houses, bitumen heating tank						

SLB系列双滚筒式沥青搅拌站

SLB series Twin-drum Asphalt Mixing Plant

简介 Introduction

- SLB系列沥青搅拌站是双滚筒搅拌站，干燥滚筒与搅拌滚筒一体化设计。
This series plant are twin Drum Asphalt Mixing Plant. The two drums (drying drum and mixing drum) are integrate design.
- 产能范围是从8-30吨/小时。
The capacity of SLB series Asphalt Mixing Plant is from 8-30t /h.

基本参数/Parameter

Model 型号	SLB-8	SLB-10	SLB-15	SLB-20	SLB-30
Capacity (t/h) 产能	8	10	15	20	30
Discharge temperature 成品料温度	120-180℃(adjustable)				
Optional components 可选部件	Aggregate Batcher, Finished silo, Coal breaker, Water filter, Bag filter Control Houses, Bitumen heating tank				



其他沥青站相关设备 Ancillary Equipment

沥青脱桶设备

Bitumen Melting Machine

主要特点 Main Performance

- 采用封闭式结构，性能环保
This series drummed bitumen melter is special for its enclosed construction which is more environmental friendly.
- 采用自动控制系统，进口自动点火燃烧器
This series drummed bitumen melter adopts automatically control system and imported auto-ignite burner.
- 适用进口，国产各种桶型，且沥青桶变形也不会影响生产，适应性超强
This series drummed bitumen melter has strong applicability. It is suitable for various types of drums. Even when the drum is out of shape, the machine could still be operated normally.
- 充分利用导热油炉排放的废气（320~450℃），用其余热二次加热脱桶（最终排气温度约150℃），且全封闭式脱桶，较连续式节能50%；
This series drummed bitumen melter features energy-saving. It make full use of hot gas (320-450℃) of burner to melt and make asphalt coming out of drums (it is about 150℃ while waste gas was let off to air). The closed-construction saves 50% energy sources compared with the exposed one.
- 结构设计合理，操作方便，易于运输、快速安装。
This series drummed bitumen melter adopts semi-mobile structure, easy to remove, fast to install. Planetary containerized for easy road transport.



基本参数/Parameter

Model 型号	DT-4	DT-6	DT-10
Productivity (t/h) 生产率（吨/小时）	2-4	4-6	8-10
Bitumen Temp 沥青温度	120℃-140℃		
Number of Drums per Batch 装桶数（桶/车）	26	32	44
Capacity of Thermal Oil Boiler 导热油加热炉产量	30×104kcal/h	50×104kcal/h	100×104kcal/h
Thermal Oil Temp(℃) 导热油加热温度	200℃-240℃		
Total Power (kW) 电器总容量	35.5	42.5	57
Total Weight (t) 整机总质量（吨）	20	21	24
Overall Dimensions (L×W×H) (mm) 主机外形尺寸（长×宽×高）	6350×2200×2560	7500×2250×2560	11800×2550×2700



沥青乳化设备

Emulsion Bitumen Plant

主要特点

Main Performance

- 采用全自动的控制系统，自动监控并调节沥青含量。设备采用双乳水罐自动混合材料，可以交替排水，从而实现连续生产。阀门气动（电动）控制，从而降低施工的劳动强度，提高工作效率；
Adopts automatic control system, automatic monitor and adjust the asphalt content. This equipment using automatic mixing tank breasts, you can alternate drainage, in order to achieve continuous production. Valve pneumatic (electric) control, thereby reducing the labor intensity of construction, improve work efficiency;
- 高效换热器，可将成品乳化沥青从高温冷却至常温，从而提高储存的稳定性；被加热的冷却水又可用于乳化沥青的生产，省掉了清水加热费用。整个过程环保节能；
High efficiency heat exchanger can cool the finished emulsion asphalt from high-temperature asphalt emulsion to room temperature, thereby improving the storage stability; The heated cooling water can be used in emulsified asphalt production, eliminating the need for water heating costs. The whole process environmentally friendly energy;
- 导热油电加热系统单独加热，并可实现自动温控。主要用于生产前对泵体的预热及生产过程中供温。取代了传统型喷灯烘焙的方式，快速便捷高效；
Thermal oil heating electric heating system heated alone and can realize automatic temperature control. The thermal oil heating system is mainly used for provide heat of warm-up and production process for temperature. Replaced the traditional way of baking blowtorch, quick and easy and efficient;
- 沥青乳化生产过程中的核心部件乳化机是由我公司自主研发，采用独特的定转子间隙调整结构，可保持极小的稳定间隙。经过特殊处理的定子与转子有很强的耐磨性与抗腐蚀性，从而保证乳化效果及其稳定性；
The core part emulsifying machine during the bitumen emulsion process was reached and developed by our company, it adopts unique stator and rotor clearance adjustment structure, can maintain the stability of small gap. After special treatment of the stator and rotor has a strong resistance to abrasion and corrosion resistance, thus ensuring the effectiveness and stability of the emulsion;
- 沥青乳化设备采用PLC控制系统。采用变频调速电机来调节沥青泵转速，通过电动调节阀门来调节乳水流量，可更加精确控制乳化沥青的沥青含量
Bitumen emulsion plant adopts PLC control system. Frequency control motor to adjust the bitumen pump speed to regulate the water flow through the electric milk regulating valves, can more precisely control the content of emulsified bitumen;
- 接触乳液的所有材料均采用优质不锈钢，有很强的耐腐蚀性，可以适用于不同类型的乳化沥青生产
All materials in contact emulsions are made of stainless steel, has a strong resistance to corrosion, can be applied to different types of emulsified asphalt production.

基本参数/Parameter

Model 型号	PSRH-6	PSRH-10	Remarks 备注
Capacity(T/H) 产量（吨/小时）	6	10	Rated capacity 额定产量
Installation power(KW) 装机功率（千瓦）	26.5	50	Theory power 理论功率
Emulsified fineness 乳化细度	< 5μm	< 5μm	
Water heating type 加热方式	Thermal oil/electric heating 导热油加热/电加热		
Blending tank volume 混合储罐容积	1.25m³×2	1.5m³×2	
Bitumen tank volume (m³) 沥青罐体积（立方米）	5	6	
Finished product tank (m³) 成品罐体积（立方米）	5	6	
Water tank volume(m³) 水罐体积（立方米）	5	6	



MFR系列煤粉燃烧器

MFR series Coal Burner

主要特点 Main Performance

- 采用新型结构，改变传统燃烧器机理，独家采用燃烧室旋转方式解决传统燃烧器易结渣燃烧不完全等缺陷。
Adopt new structure to optimize traditional machine mechanism, exclusively adopt the combustion chamber rotary to solve traditional problems such as slagging or burning incompletely.
- 火焰温度高，节约能源，燃烧充分
The high flame temperature that can burn fully and save energy.
- 采用独家配料的高性能耐火砖，延长使用寿命。
With exclusive high performance fire-brick, prolonging the service life.
- 可连续生产，无须天天清渣。
Continuous production, no need to slag removal everyday.
- 生产成本低，仅为燃油燃烧器的1/3。
The cost of the production is as little as 1/3 of that of the oil burner.
- 煤粉机锤片采用NM500高耐磨材料
Coal pulverizer broken hammer adopt NM500 high wear-resisting material
- 全自动控制系统，自动点火自动调节风门，方便操作
Automatic control system, autoignition and adjust damper, easy to operate.



基本参数/Parameter

Model 型号	MFR500	MFR1000	MFR1500	MFR2000	MFR3000	MFR4000
Motor power (KW) 电机功率(千瓦)	31.25	48.25	73.75	97.25	144.5	205.95
Rated coal burning amount(t/h) 额定烧煤量（吨/小时）	0.45	1	1.5	2	2.86	3.66
Mixer output (t/h) 拌合机产量（吨/小时）	25-40	60-85	100-125	140-170	200-250	280-320
Material temperature control 料温控制（摄氏度）	130-180					
Coal powder granularity(mesh) 煤粉粒度（目）	180-200					

主要部件和材料 Main parts and materials

Item 项目	Material spec 材料规格	Remark 备注
Firebrick 耐火砖	AL2O3≥80	Some others using70model 同类厂家采用70型
Coal pulverizer hammer煤粉机锤片	Nm500	high wear-resistant materials 高耐磨材料
Fire opening 引火口	20g	boiler plate 锅炉钢
Support 支架	carbon steel 碳钢	
Coal spraying pipe 喷煤管	metal hose 金属软管	Some others using rubber pipe 同类厂家采用橡胶管

煤质要求 Specific requirements for coal quality

Item 项目	Parameter 参数	Remark 备注
Feeding size 煤粉机进料粒度	≤25mm	Compared to the previous request of≤5mm, it's great improved and applicable. 比之前≤5mm的要求，有了极大提高和适用性
Net calorific value 煤燃烧值	≥4500Kcal	Many low combustion value of inferior coal has been fully used. 使很多低燃烧值的劣质煤得到了充分利用
Volatile 挥发分	≥25%	
Sulphur content 含硫量	≤2%	Rotary combustion chamber solve the slag problem. 旋转炉膛解决了结渣问题
Inherent moisture 水分含量	≤10%	Powerful Pulverized coal blower. 强大的煤粉鼓风机
Ash content 灰分	≤15%	High energy ignition device ensure ignition success rate. 高能量点火装置保证点火成功率

MFR – M系列油煤气多功能燃烧器

MFR-M Muti-function Oil&Gas&Coal Burner

主要特点 Main Performance

沥青拌合站上使用的传统型煤粉燃烧器体积庞大，使用寿命短，维护成本高，易损件多，用户使用和维护都十分麻烦。我公司采用德国最先进的“半开放式煤粉燃烧”技术，开发出的新型产品彻底抛弃耐火砖等易损坏的材料，使用进口耐热钢板制作燃烧室，整机使用寿命大大提高。这种新型的煤粉燃烧器使用普通磨煤喷粉机制成的100目粗煤粉即可充分燃烧，若使用200目的商品细煤粉则燃烧效果将更好。能把100目粗煤粉很好燃烧而且不用耐火砖的燃烧器目前国内只有我们一家公司可以做到，在煤粉燃烧技术上超越了目前市场上所有的其他品牌。

Conventional pulverized coal burner used in asphalt mixing stations is always very big, short service life, high maintenance cost and many accessories. This brings many operation and maintenance problems to customer. After years of research and practice, our company adopts German most advanced “semi-open pulverized coal combustion” technology and developed new type product without any firebricks and other quick wear parts. The combustion chamber is made of import heat-resisting steel sheet and plate. The service life of the whole machine is greatly improved.

As for traditional coal burner, the coal pulverizer has to grinder coal into 200mesh, it can fire completely, but our new type coal burner can make 100 mesh coal power fire completely. Without using firebricks and make 100 mesh coal power burning completely, currently only our company have this technology in China.

优势介绍 Main Features

- 采用目前最先进德国煤粉燃烧技术，减少了火焰对燃烧室内壁的烧蚀和冲刷，燃烧室内壁上几乎不结渣，偶有个别部位结渣其厚度也仅有1-2毫米，对燃烧效果及整机寿命无不良影响。
Adopting most advanced German coal combustion technology, Ablation and erosion of combustion chamber walls are reduced, Occasionally, the thickness of the slag is only 1-2 mm, which has no adverse effect on the combustion effect and the whole life.
- 燃烧室内部采用特殊的结构，风道布置合理，配风比例恰当，煤粉火焰能在燃烧室内持续稳定燃烧，燃烧充分，热效率高。
in the combustion chamber, special structure is adopted, the wind tunnel layout is reasonable, the proportion of air distribution is appropriate, and the coal powder flame can be continuously and steadily burning in the combustion chamber.
- 风门可以远程无级调节，火焰长度及粗细可根据实际工况在控制室内进行实时调节，以取得最佳的加热效果。
The door can be adjusted remotely, and the length and thickness of the flame can be adjusted in real time according to the actual condition, so as to achieve the best heating effect
- 燃烧室采用进口耐热钢制造，不再使用任何耐火砖或耐火浇注料等易损材料，使用寿命数倍于采用耐火砖衬砌的传统燃烧器，日常使用过程中几乎不需要进行维护保养。
Combustion chamber adopts imported refractory steel manufacturing, no longer use any brick or perishable materials such as refractory castable, adopted several times the service life of refractory lining of the traditional burner, daily use process require.

基本参数/Parameter

型号 Model	最大燃煤量 Max coal capacity	鼓风机 Fan power	配套搅拌站型号 Suit for asphalt plant
MFR-M1000	1100kg/h	7.5KW	1000
MFR-M1500	1650kg/h	15KW	1500
MFR-M2000	2200kg/h	18.5KW	2000
MFR-M3000	3300kg/h	22KW	3000
MFR-M4000	4400kg/h	30KW	4000
MFR-M5000	5500kg/h	37KW	5000
燃油气 Oil/gas	输出功率 Max output	最大耗气量 Max gas capacity	最大耗油量 Max oil capacity
MFR-M1000	6980kw	700 m³ /h	600kg/h
MFR-M1500	11,160kw	1100m³ /h	900kg/h
MFR-M2000	15,630kw	1500m³ /h	1200kg/h
MFR-M3000	20,000kw	2100m³ /h	1800kg/h
MFR-M4000	29,000kw	3000m³ /h	2400kg/h
MFR-M5000	39,000kw	4000m³ /h	3000kg/h



沥青罐

Bitumen Tank

导热油加热沥青罐 Thermal-oil Bitumen Tank



电加热式沥青罐 Electrical Heating Bitumen Tank



直热式沥青罐 Directly-heating Bitumen Tank



客户来访

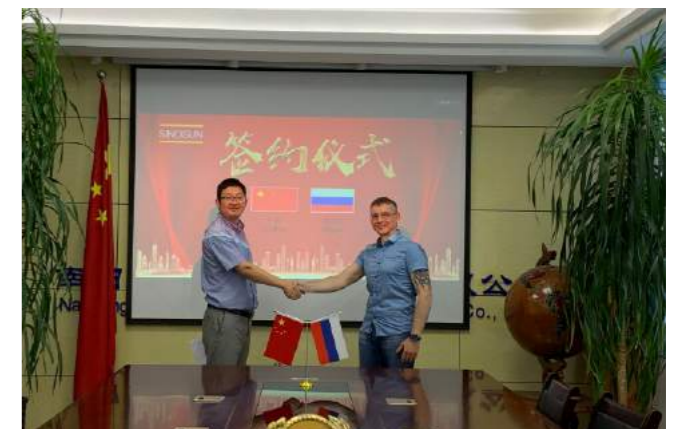
Foreign Customer

随着我们公司的发展壮大和世界一体化的发展，公司越来越重视海外市场的开发与维护。目前，我公司的沥青搅拌设备产品已遍布全球，包括东南亚，俄罗斯，非洲，南美洲等地区。深受广大客户的欢迎。

With the development of our company, we begin to put more attention on the overseas market. Our asphalt mixing plant products have been services for customers all over the world including Southeast Asia, Africa, South American, etc.

经过数年的建设，我公司形成了专门的海外营销团队，构成了完善的海外销售渠道，为客户创造最大的价值而毫不懈怠。

At the same time, after years of operation, we have formed our professional overseas marketing service team, constructed the perfect over sales channels.



服务 Service

售前服务 Pre-sales service

专业工程师将按照您的工程量，施工场地，预算等具体要求，提出专业建议：运用先进的CAD,PRO/E制图，为您提供各种专业设计方案，制定出最合适的解决方案。
Professional engineers will propose the professional suggestions according to your requirements and performance parameter : Use advanced CAD , PRO/E to make maps , can offer various design plans and make the best solution for you .

售中服务 Medium-sales service

专业技术人员及时解答用户在实际应用中将会遇到的疑难问题和相关支持，并将用户方的技术人员进行现场培训，讲授设备的安装操作，保养和应用注意事项，使客户感受到我们的真诚。

The technician will answer the difficult problem and technical support timely that users will meet in the course of using while selling , and will train the technical staff for customer, teach them how to install maintain and use , make customers feel the sincerity of our company.

售后服务 After-sales service

公司拥有专业培训，经验丰富的工程技术人员，并建立了用户档案，主要负责客户端的产品维修保养及使用指导，公司的销售服务人员随时为客户提供优质的服务，以保证设备高效运行。

The company has professional and experienced engineers and technicians , set up the files for every user to responsible for the maintenance and using guidance of products , the seller will offer high-efficiently.

日常维修 Maintenance

- 定期给设备各部位轴承加注润滑
Adding the lubricant to every bearing regularly
- 定期给设备传动链涂润滑油，并适当调整
Daub the grease on drive chain regularly, and adjust appropriately
- 经常检查个螺栓的紧固情况
Often check the fastening situation of every bolt
- 及时清理空压机滤清器，冷却器
Clear up the filler, cooler of air compressor in time
- 检查各输送带和皮带磨损情况，必要时更换
Check the abrasion situation of every conveyer belt and belt should change if necessary
- 定期检查燃油管道，液压系统，确保工作状态良好
Check the engineering pipeline of fuel, hydraulic system to make sure they are in good state

合作品牌 Cooperative Supplier



工程案例 Projects



SR 2015 Asphalt Plant in Thailand



SAP160 Asphalt Plant in Malaysia



SAP120 Asphalt Plant in Russia



MAP1700 Asphalt Plant in Morocco



SR 2015 Asphalt Plant in Gansu, China



SAP160 Asphalt Plant in Egypt



MAP1000 Asphalt Plant in Philippines



SAP64 Asphalt Plant in Philippines



SAP80 Asphalt Plant in Russia



SAP120 Asphalt Plant in Indonesia



MAP1000 Asphalt Plant in Thailand



SAP80 Asphalt Plant in Vietnam